

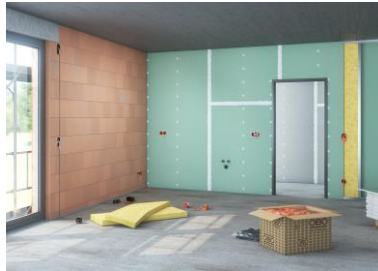
October 2022

Page 1 of 2

The WIN series from OBO

Flush-mounted and cavity wall boxes that redefine efficient working

OBO Bettermann presents the WIN series: A completely new range of flush-mounted and cavity wall boxes. During development, the focus was very much on simple, quick and smooth-running operations. The result is a host



of product properties, some of which are patented, through which the OBO flush-mounted and cavity wall boxes are setting new standards in the quality and speed of installation. Both the flush-mounted and the cavity wall boxes are available in a range of designs with a choice of conventional or airtight version. Devices perfectly

matched to the various designs and product details complete the range.

OBO flush-mounted boxes: Simple and quick installation

Easier work is welcome on any construction site, and this is exactly what the OBO flush-mounted boxes offer through product details such as the connector with patented bayonet lock. The lock can be coupled on both sides, ensuring maximum flexibility.

Labelled cable and pipe entries simplify the selection process for an added installation advantage.



A formula that should also be noted for the OBO flush-mounted boxes is "4x3". Four screw domes arranged around the OBO flush-mounted boxes, each with three holes, ensure precise alignment and exact fastening of the device each and every time – even if plastering has not been entirely suc-

cessful.

An additional unique feature of the airtight flush-mounted boxes are the thermoplastic elastomer (TPE) membrane entries. They can be pierced easily with cables and pipes, and so no additional tools are needed.

Installation advantage guaranteed – with OBO cavity wall boxes

The new cavity wall boxes from OBO also ensure with numerous product details, some of which are patented, that cables and pipes can be installed even more effectively and safely. This saves a considerable amount of time on any construction site.

For further information:

Fabienne Wolf-Kunke
Sales Marketing

OBO Bettermann Vertrieb Deutschland GmbH & Co. KG
Langer Brauck
58640 Iserlohn, Deutschland

Tel.: +49 2371 7899-2241
E-Mail: wolf-kunke.fabienne@obo.de
www.obo.de

October 2022

Page 2 of 2

One product detail that sets the OBO cavity wall boxes apart from comparable models is the connector. The OBO variant offers around 8% more volume than conventional models. This makes through-wiring noticeably easier.

Another unique product detail, the 2x3 screw dome, ensures maximum tolerance compensation because the device is precisely fastened each and every time.



Labelled cable and pipe entries simplify the selection process and guarantee that the cable stability required by the standards is achieved.

One highlight of the standard cavity wall boxes is the combination entries, which can receive both M20 and M25 electrical installation pipes. This prevents larger pipe entries from being opened accidentally. Just like the flush-mounted boxes, the airtight variants of the OBO cavity wall boxes feature TPE membrane entries, allowing cables or pipes to be inserted without the use of tools.

Perfectly matched devices for every installation challenge

Devices perfectly matched to the various designs and product details complete both the flush-mounted and cavity wall box ranges.

OBO comes up with a market innovation in the devices range for cavity wall boxes too: A fastening element that is ideally suited for use in thin panelling such as glass or metal plates, for instance. This is simply fastened to the clamping plate of the cavity wall boxes to bridge the gap to the panelling and ensures that the cavity wall boxes can be used from a panelling thickness of 0.2 mm. No matter which variant is used, the fastening element fits on any cavity wall box from the OBO product range.

The device range for the new OBO flush-mounted boxes includes a small, yet all the more effective, problem solver. The Quick-Fix system offers a fast solution for fixing flush-mounted boxes in the wall completely without plastering or gluing. The ultimate stability here is created by plaster infiltrating between the stone and the box. The compensation rings, on the other hand, are the ideal solution if a wall happens to be built higher than planned. This is easily done by a thicker layer of plaster or tiles. In such cases, the compensation ring extends the box for the flushest possible finish with the wall surface.

For further information:

Fabienne Wolf-Kunke
Sales Marketing

OBO Bettermann Vertrieb Deutschland GmbH & Co. KG
Langer Brauck
58640 Iserlohn, Deutschland

Tel.: +49 2371 7899-2241
E-Mail: wolf-kunke.fabienne@obo.de
www.obo.de